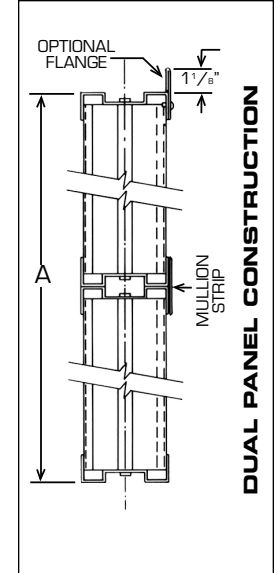
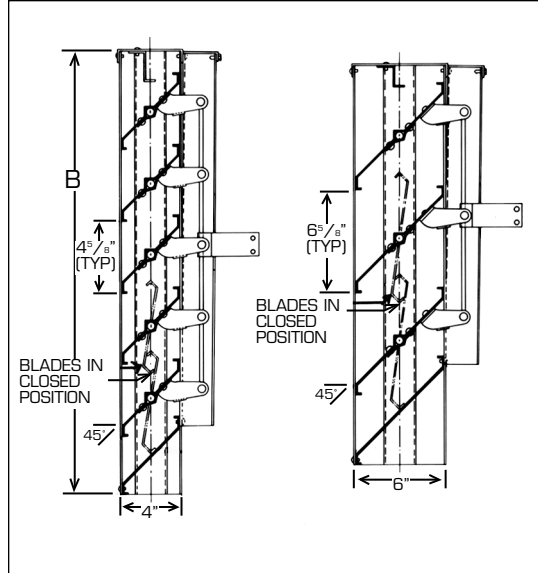
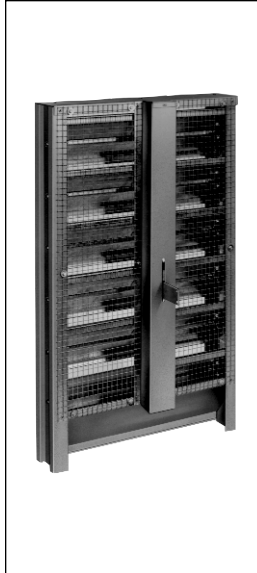




**CERTIFICATION & SUBMITTAL
MODELS 4405 & 4605 FABRICATED METAL LOUVER
Adjustable Blade @ 45°**



STANDARD SPECIFICATIONS

- **FRAME:** 12 gauge galvanized steel head and sill; with 14 gauge galvanized steel jambs.
- **BLADES:** 16 gauge galvanized "V" reinforced steel blades.
- **AXLES:** 1/2" diameter x 2" long plated steel rods.
- **BEARINGS:** 1/2" diameter self-lubricating porous bronze..
- **HARDWARE:** Plated steel center brackets; brass pivots; 1/4" or 5/16" dia. plated steel linkage rod.
- **OPERATING ARM:** 14 gauge galvanized steel.
- **COVER CHANNEL:** 18 gauge galvanized steel.
- **BIRDSCREEN:** 19 gauge 1/2" x 1/2" galvanized steel
- **FINISH:** Standard Mill.
- **MAX. SINGLE SECTION:** 60" X 96".
- **MINIMUM SIZE:** Model 4405: 12" x 10".
Model 4605: 12" x 13".

OPTIONS

- 06 Blade edge seals.
- 08 Spring stainless steel side seals.
- 31 Flange.
- 34 Buck Frame (Requires Flanged Louver).
- 35 Sill Extension.
- 40 Standard Screen in removable frame.
- 42 18 x 16 Mesh aluminum insect screen.
- 63 Burglar Bars.
- 81 15 Gauge Construction
- 86 Aluminum construction
- 89 Sleeve.
- 90 Jackshaft.
- 92 Actuators.
- 95 Finishing

NOTE: A and B are opening dimensions. Unless otherwise specified, louvers are made 1/4" undersize.

**PERFORMANCE DATA MODEL 4405
FABRICATED METAL LOUVERS
Adjustable Blade @ 45°**

**MODEL 4405
FREE AREA CHART**

		A - WIDTH (In Inches)												
		12	16	29	24	28	32	36	40	44	48	52	56	60
B - HEIGHT (In Inches)	12	.25	.35	.45	.55	.65	.74	.84	.94	1.04	1.14	1.24	1.33	1.43
	16	.43	.60	.77	.94	1.11	1.28	1.45	1.62	1.79	1.96	2.13	2.30	2.47
	20	.43	.60	.77	.94	1.11	1.28	1.45	1.62	1.79	1.96	2.13	2.30	2.47
	24	.62	.86	1.10	1.34	1.58	1.82	2.06	2.30	2.54	2.78	3.02	3.26	3.50
	28	.80	1.11	1.42	1.73	2.05	2.36	2.67	2.98	3.29	3.60	3.92	4.23	4.54
	32	.98	1.36	1.75	2.13	2.51	2.89	3.28	3.66	4.04	4.43	4.81	5.19	5.57
	36	1.16	1.62	2.07	2.52	2.98	3.43	3.89	4.34	4.79	5.25	5.70	6.16	6.61
	40	1.35	1.87	2.40	2.92	3.45	3.97	4.50	5.02	5.55	6.07	6.60	7.12	7.65
	44	1.53	2.12	2.72	3.32	3.91	4.51	5.10	5.70	6.30	6.89	7.49	8.08	8.68
	48	1.71	2.38	3.04	3.71	4.38	5.05	5.71	6.38	7.05	7.71	8.38	9.05	9.72
	52	1.71	2.38	3.04	3.71	4.38	5.05	5.71	6.38	7.05	7.71	8.38	9.05	9.72
	56	1.89	2.63	3.37	4.11	4.85	5.58	6.32	7.06	7.80	8.54	9.28	10.01	10.75
	60	2.07	2.88	3.69	4.50	5.31	6.12	6.93	7.74	8.55	9.36	10.17	10.98	11.78
	64	2.26	3.14	4.02	4.90	5.78	6.66	7.54	8.42	9.30	10.18	11.06	11.94	12.82
	68	2.44	3.39	4.34	5.29	6.25	7.20	8.15	9.10	10.05	11.00	11.96	12.91	13.86
	72	2.62	3.64	4.67	5.69	6.71	7.73	8.86	9.78	10.80	11.83	12.85	13.87	14.89
76	2.80	3.90	4.99	6.08	7.18	8.27	9.37	10.46	11.55	12.65	13.74	14.84	15.93	
80	2.80	3.90	4.99	6.08	7.18	8.27	9.37	10.45	11.55	12.65	13.74	14.84	15.93	
84	2.99	4.15	5.32	6.48	7.65	8.81	9.98	11.14	12.31	13.47	14.64	15.80	16.97	
88	3.17	4.40	5.64	6.88	8.11	9.35	10.58	11.82	13.06	14.29	15.53	16.76	18.00	
92	3.35	4.66	5.96	7.27	8.58	9.89	11.19	12.50	13.81	15.11	16.42	17.73	19.04	
96	3.53	4.91	6.29	7.67	9.05	10.42	11.80	13.18	14.56	15.94	17.32	18.69	20.07	

FREE AREA (Sq. Ft.)

RECOMMENDED MAXIMUM INTAKE FREE AREA VELOCITY 750 F.P.M.

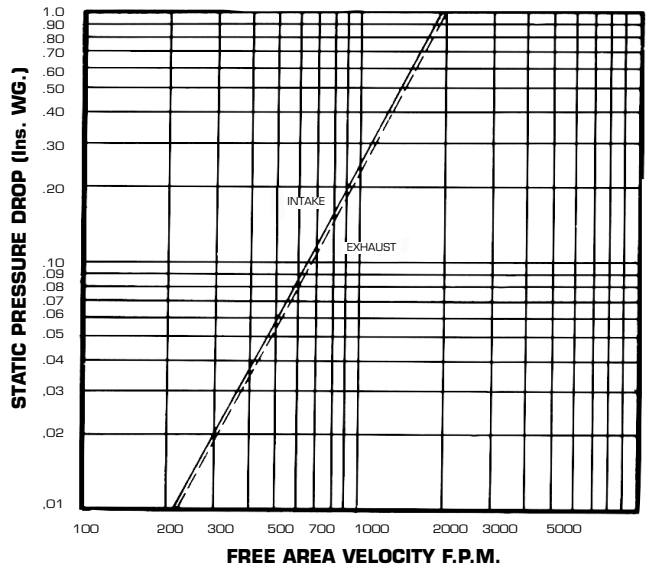
**MODEL 4605
FREE AREA CHART**

		A - WIDTH (In Inches)												
		12	16	29	24	28	32	36	40	44	48	52	56	60
B - HEIGHT (In Inches)	12	.16	.23	.30	.36	.43	.50	.57	.63	.70	.77	.84	.91	.97
	15	.42	.60	.77	.95	1.13	1.31	1.48	1.66	1.84	2.01	2.19	2.37	2.55
	20	.42	.60	.77	.95	1.13	1.31	1.48	1.66	1.84	2.01	2.19	2.37	2.55
	24	.68	.97	1.25	1.54	1.83	2.11	2.40	2.69	2.97	3.26	3.54	3.83	4.12
	28	.94	1.34	1.73	2.13	2.52	2.92	3.32	3.71	4.11	4.50	4.90	5.29	5.69
	32	.94	1.34	1.73	2.13	2.52	2.92	3.32	3.71	4.11	4.50	4.90	5.29	5.69
	36	1.20	1.71	2.21	2.72	3.22	3.73	4.23	4.74	5.24	5.75	6.25	6.75	7.26
	40	1.20	1.71	2.21	2.72	3.22	3.73	4.23	4.74	5.24	5.75	6.25	6.75	7.26
	44	1.46	2.07	2.69	3.30	3.92	4.53	5.15	5.76	6.38	6.99	7.61	8.22	8.83
	48	1.72	2.44	3.17	3.89	4.62	5.34	6.06	6.79	7.51	8.24	8.96	9.68	10.41
	52	1.72	2.44	3.17	3.89	4.62	5.34	6.06	6.79	7.51	8.24	8.96	9.68	10.41
	56	1.98	2.81	3.65	4.48	5.31	6.15	6.98	7.81	8.64	9.48	10.31	11.15	11.98
	60	1.98	2.81	3.65	4.48	5.31	6.15	6.98	7.81	8.64	9.48	10.31	11.15	11.98
	64	2.24	3.18	4.12	5.07	6.01	6.95	7.90	8.84	9.78	10.72	11.67	12.61	13.55
	68	2.50	3.55	4.60	5.65	6.71	7.76	8.81	9.86	10.92	11.97	13.02	14.07	15.12
	72	2.50	3.55	4.60	5.65	6.71	7.76	8.81	9.86	10.92	11.97	13.02	14.07	15.12
76	2.76	3.92	5.08	6.24	7.40	8.57	9.73	10.89	12.05	13.21	14.37	15.53	16.70	
80	2.76	3.92	5.08	6.24	7.40	8.57	9.73	10.89	12.05	13.21	14.37	15.53	16.70	
84	3.02	4.29	5.56	6.83	8.10	9.37	10.64	11.91	13.18	14.48	15.73	17.00	18.27	
88	3.28	4.66	6.04	7.42	8.80	10.18	11.56	12.94	14.32	15.70	17.08	18.46	19.84	
92	3.28	4.66	6.04	7.42	8.80	10.18	11.56	12.94	14.32	15.70	17.08	18.46	19.84	
96	3.54	5.03	6.52	8.01	9.50	10.99	12.48	13.96	15.45	16.94	18.43	19.92	21.41	

FREE AREA (Sq. Ft.)

RECOMMENDED MAXIMUM INTAKE FREE AREA VELOCITY 800 F.P.M.

**AIR PERFORMANCE
MODEL 4405**



Data shown includes the effect of 1/2" x 1/2" x 19 ga. galvanized birdscreen. Graphs are corrected to standard air density .075 lb. per cubic foot.